

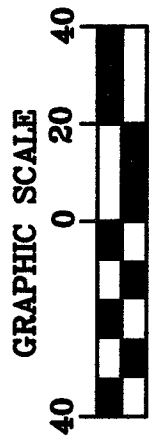
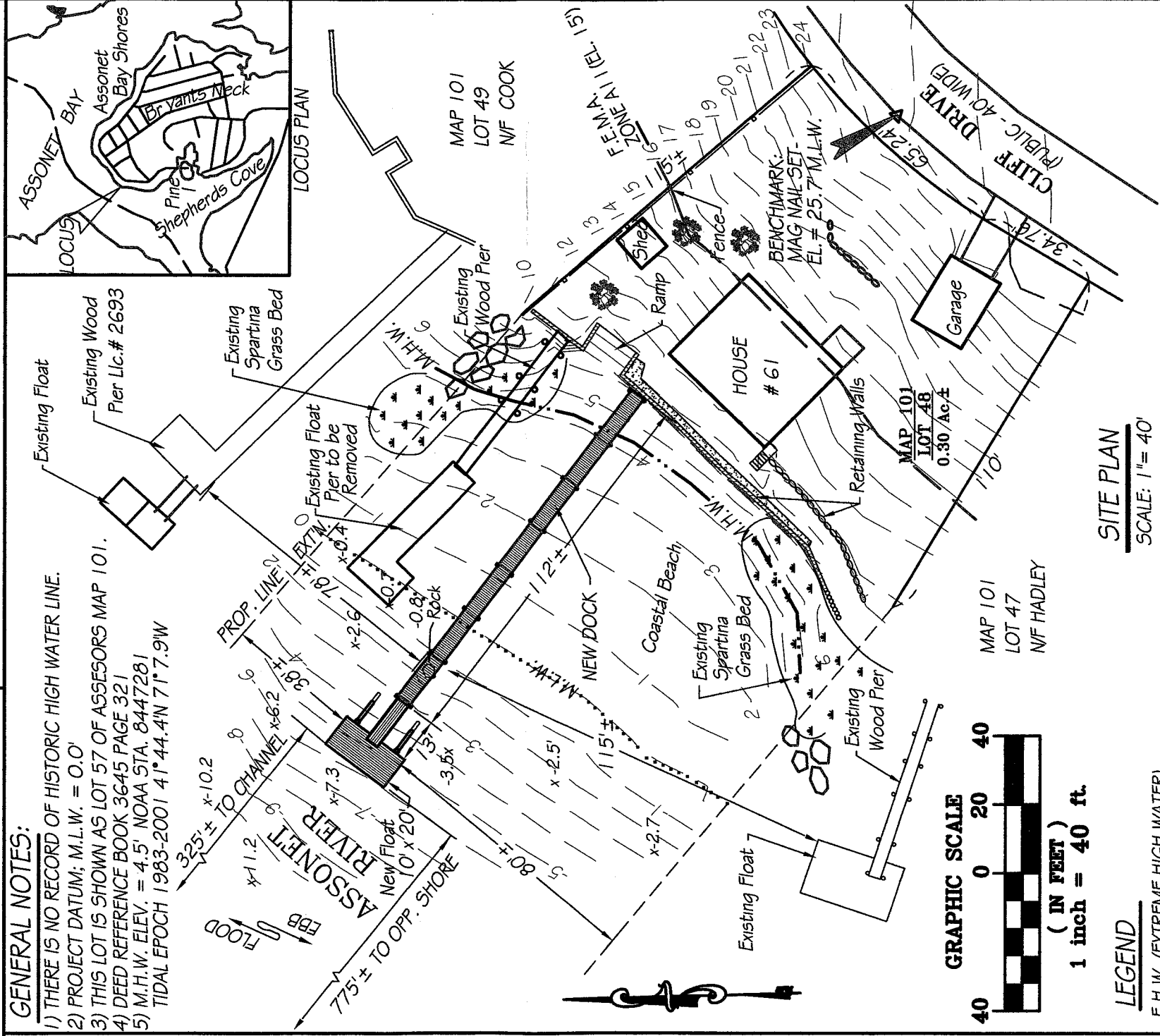
REGISTRY USE:

I CERTIFY THAT THIS PLAN CONFORMS WITH THE RULES AND REGULATIONS OF THE REGISTRY OF DEEDS.

PREPARER

**GENERAL NOTES:**

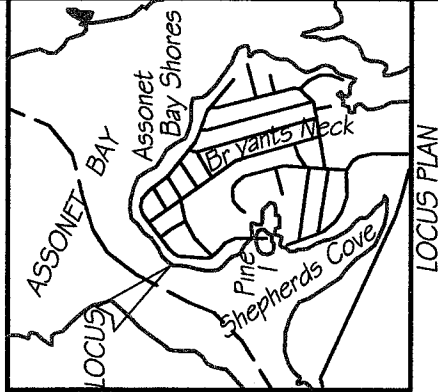
- 1) THERE IS NO RECORD OF HISTORIC HIGH WATER LINE.
- 2) PROJECT DATUM; M.L.W. = 0.0'
- 3) THIS LOT IS SHOWN AS LOT 57 OF ASSESSORS MAP 101.
- 4) DEED REFERENCE BOOK 3645 PAGE 321
- 5) M.H.W. ELEV. = 4.5' NOAA STA. 8447281  
TIDAL EPOCH 1983-2001 41°44.4'N 71°7.9'W



SITE PLAN  
SCALE: 1" = 40'

**LEGEND**

- E.H.W. (EXTREME HIGH WATER)
- M.H.W. (MEAN HIGH WATER)
- ..... M.L.W. (MEAN LOW WATER)
- FLOOD ZONE BOUNDARY
- SPOT ELEVATIONS x-2.5'



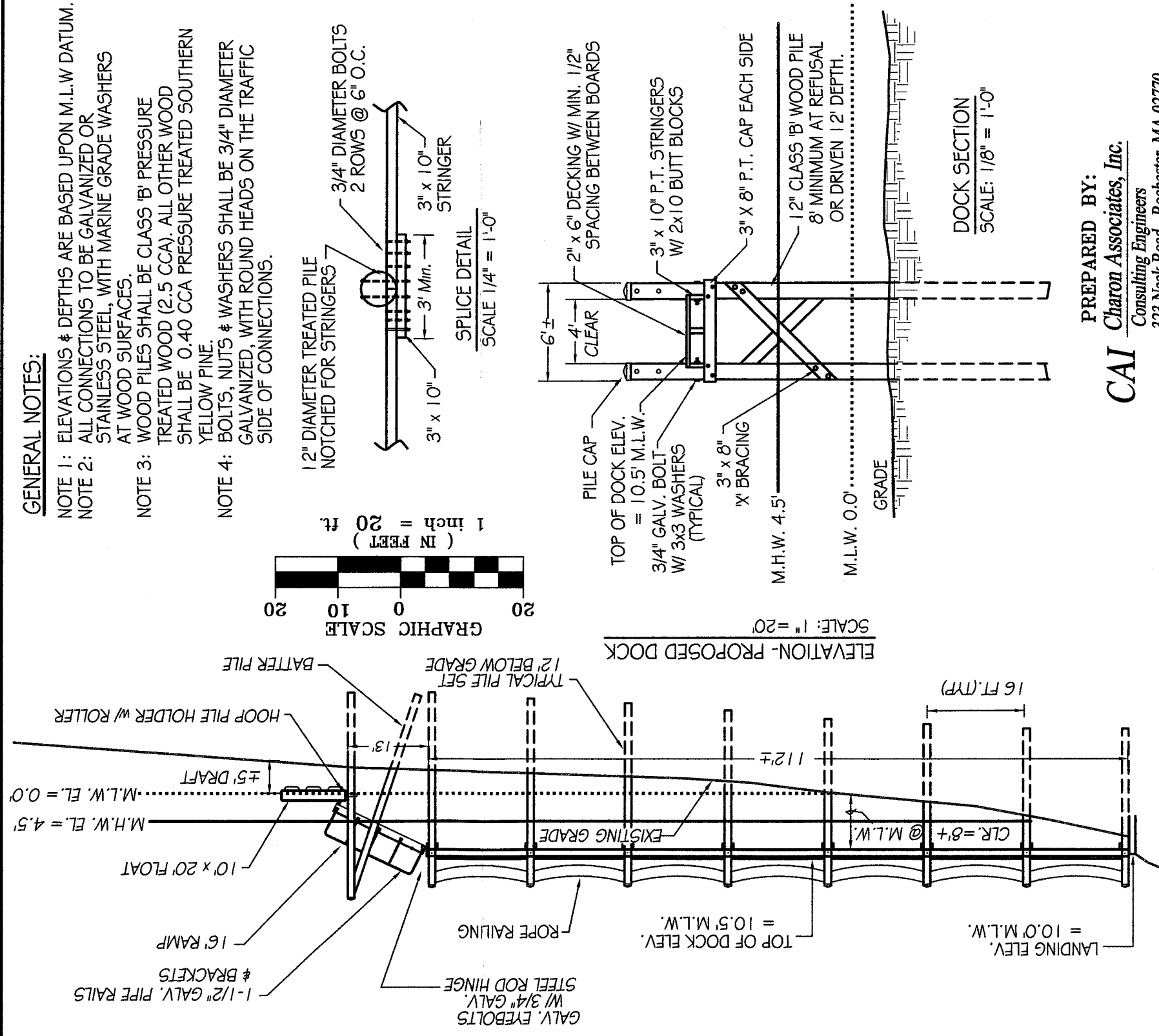
**CAI** PREPARED BY:  
Charon Associates, Inc.  
Consulting Engineers  
323 Neck Road - Rochester, MA 02770  
Tel: 508-763-8362 Fax: 508-763-9582

PLAN ACCOMPANYING PETITION OF:  
ALAN K. WHITTEN  
61 CLIFF DRIVE  
FREETOWN (ASSONET), MA. 02702  
TO LICENSE, CONSTRUCT AND MAINTAIN  
A PRIVATE DOCK ON THE ASSONET RIVER  
PAGE 1 OF 2 DATE: OCTOBER 27, 2008  
REV. 1: NOV. 17, 2008  
REV. 2: JUNE 24, 2010 REV. 3: NOV. 26, 2010

REGISTRY USE:

I CERTIFY THAT THIS PLAN CONFORMS WITH THE RULES AND REGULATIONS OF THE REGISTRY OF DEEDS.

PREPARER



**GENERAL NOTES:**

- NOTE 1: ELEVATIONS & DEPTHS ARE BASED UPON M.L.W DATUM.
- NOTE 2: ALL CONNECTIONS TO BE GALVANIZED OR STAINLESS STEEL, WITH MARINE GRADE WASHERS AT WOOD SURFACES.
- NOTE 3: WOOD PILES SHALL BE CLASS 'B' PRESSURE TREATED WOOD (2.5 CCA). ALL OTHER WOOD SHALL BE 0.40 CCA PRESSURE TREATED SOUTHERN YELLOW PINE.
- NOTE 4: BOLTS, NUTS & WASHERS SHALL BE 3/4" DIAMETER GALVANIZED, WITH ROUND HEADS ON THE TRAFFIC SIDE OF CONNECTIONS.

PLAN ACCOMPANYING PETITION OF:  
ALAN K. WHITTEN  
61 CLIFF DRIVE  
FREETOWN (ASSONET), MA. 02702  
TO LICENSE, CONSTRUCT AND MAINTAIN  
A PRIVATE DOCK ON THE ASSONET RIVER  
PAGE 2 OF 2 DATE: OCTOBER 27, 2008  
REV. 1: NOV. 17, 2008  
REV. 2: JUNE 24, 2010 REV. 3: NOV. 26, 2010

PREPARED BY:  
**CAI**  
Charon Associates, Inc.  
Consulting Engineers  
323 Neck Road - Rochester, MA 02770  
Tel: 508-763-8362 Fax: 508-763-9582